



## Leander Road, Brixton, SW2

2 bedroom flat - conversion for sale

£500,000

Leasehold

### Property Details

A bright and unique two double bedroom, two bathroom apartment nestled within an attractive double-fronted Victorian property. This beautifully appointed home occupies a desirable first-floor position, benefitting from high ceilings, sash windows, and an elegant layout that enhances the generous proportions. A welcoming entrance hall leads into a spacious reception room with leafy views, perfect for both relaxing and entertaining. From here, steps descend into a thoughtfully designed, light-filled kitchen, featuring fluted wooden cabinetry, wrap-around storage, and sleek integrated appliances beneath a skylight. Both bedrooms are well-proportioned doubles, separated for privacy—ideal for sharers or guest accommodation. One boasts a contemporary en-suite shower room, while the larger room enjoys fitted wardrobes and sits beside the stylish main bathroom, complete with bathtub and overhead shower. Neutrally decorated throughout, the property is ready to move into while offering scope for personalisation. This charming, unique home combines peaceful living with excellent local amenities and transport links.

### Features

- Two double bedrooms
- Two bathrooms
- Double fronted Victorian conversion
- Unique layout
- Sought-after road with annual party
- Large supermarket in five minutes
- Brockwell Park a five-minute walk
- Herne Hill a ten-minute stroll through the park
- Brixton a fourteen-minute walk
- Chain-free

Council tax band C

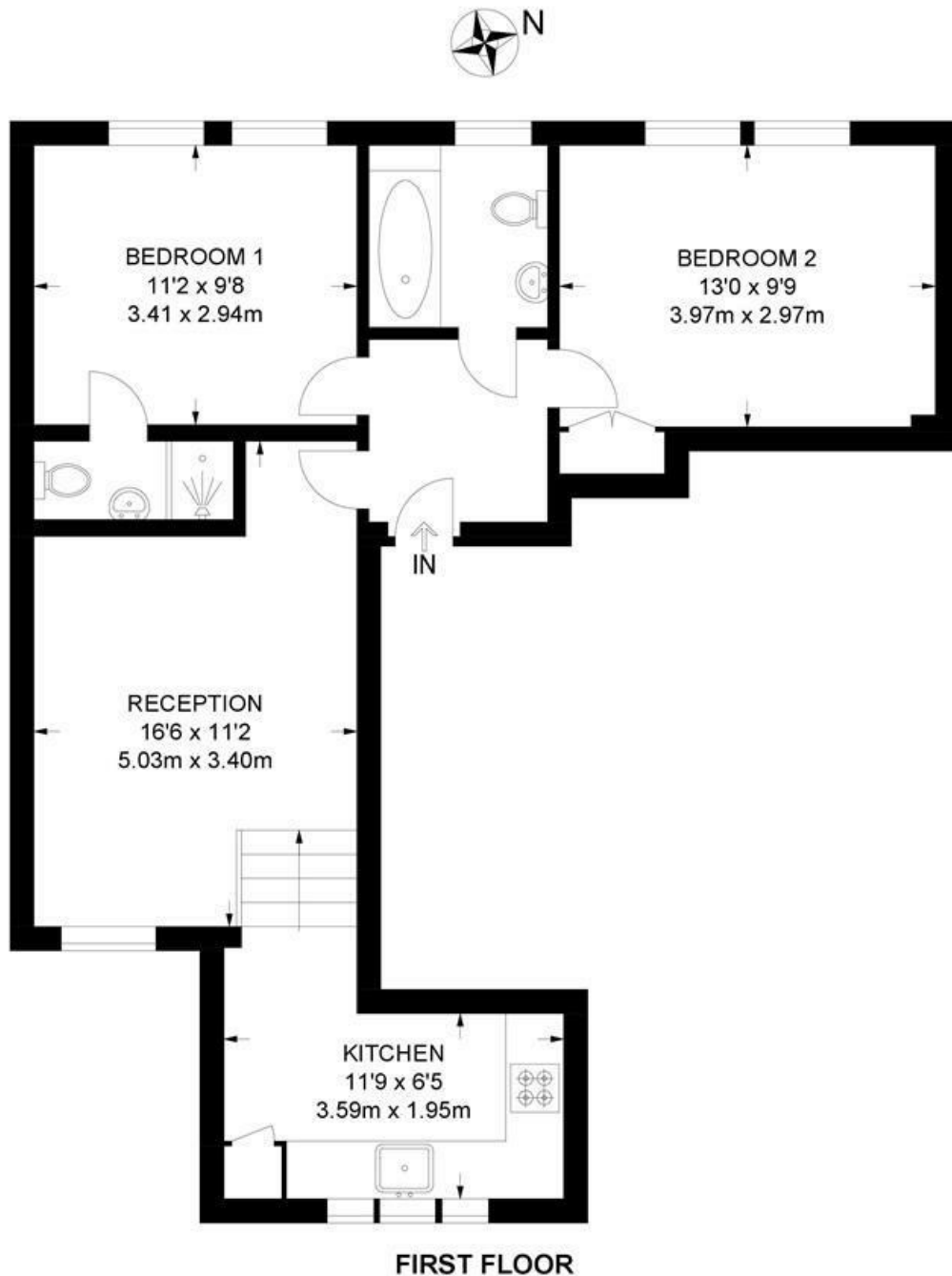
EPC rating C (74)



Leander Road, Brixton, SW2

**Leander Road, SW2**  
**2 Bedroom Flat**

APPROXIMATE GROSS INTERNAL AREA: **608 SQ FT / 56 SQ M**



While we try our very best, floor plans are produced as a guide only and we take no responsibility for the precise accuracy with which any property is represented.

Leander Road, Brixton, SW2

